

SIZE: 720x208mm
FRONT



Wi-Fi COLOR FORECAST STATION

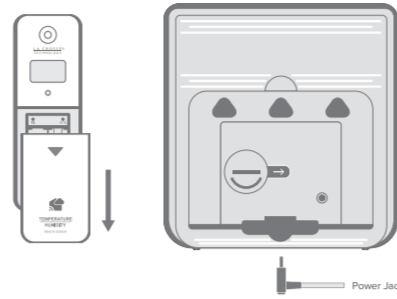


SET UP GUIDE Model LW3101

Table of Contents	
BASICS	
Initial Setup	03
Station Settings	04-05
Buttons	05
LCD Display Brightness	05-06
Auto-Dim Settings	05-06
Time and Calendar	06
Low Battery Indicators	09
LA CROSSE VIEW	
Connecting to the App	03
Connecting Your Station	03-04
Adding Sensors	04
Add-On Sensor Info	04
TEMP. AND HUMIDITY	
Viewing Your TH Data	06-07
History Records	07
Temp. & Humidity Alerts	07
FORECAST	
Viewing Your Forecast Data	07-09
Viewing Extended Forecast	08
Forecast Icons	09
PRESSURE	
Relative Pressure	09
SENSORS	
Mounting Your TH Sensor	10
Add-On Sensor Info	10
Adding an Extra Sensor	10
APPENDIX	
Specifications	10
Care and Maintenance	11
Cautions/Statements	11
Support	11
Recycling & Disposal	11
Liability Disclaimer	12

BASICS

Initial Setup



Power UP

Weather Station
Insert the 5V Power Adapter into an outlet, and then plug it into the Power Jack on the back of the station. Next, remove the Insulation Tab from the Station's Battery Compartment.

Thermo-Hygro Sensor
Install 2 fresh "AA" batteries according to polarity and replace battery cover. The blue LED light will flash when transmitting.

Note: It may take up to 10 minutes for your sensor data to appear on your station's screen.

LA CROSSE VIEW

Connecting to the App

La Crosse View.

Stay connected to your home anytime, anywhere with the La Crosse View app. Monitor home conditions and set alerts so your home can get ahead of you when something seems off. Connecting your station is optional and the display will function as a standalone unit without the Wi-Fi connection. However, we recommend connecting during the initial setup, as it will save you time and unlock all of the advanced features right away.

Download the La Crosse View App. Visit the App Store or Google Play Store to download the free La Crosse View app onto your mobile device.

Launch the App

Open the La Crosse View app and follow the on-screen setup instructions.

For more information, go to our website:

<http://www.lacrossetechnology.fr/contact.html>

LA CROSSE VIEW

Connecting Your Station

Now that you've created your La Crosse View account, it's time to connect your station to your home router using the La Crosse View app.

Connecting to Your Wi-Fi Network

1. The La Crosse View app is required to connect your station to the Wi-Fi network. Download and install the app first.
2. The app will provide detailed instructions and inform you what buttons to press while connecting the display to your Wi-Fi network.

Initial Setup of a New Station: If this is a new station and is not added to your account yet, tap "Add Device" in the app and follow the instructions on your mobile device to add the station to your account and connect to Wi-Fi.

Reconnecting to Wi-Fi: If the station is already in your account and you would like to reconnect to Wi-Fi, tap "Connect Wi-Fi" in the app and follow the instructions on your mobile device to connect to Wi-Fi. When connected, the Wi-Fi icon will appear on the display.

Checking Your Station's Wi-Fi Status

Press the Wi-Fi button on the top of the station to view your Wi-Fi Status.



NO WEATHER SERVICE: Your internet weather and time services are not connecting. These should resolve on their own, please be patient.

VOIR APP RECONNECTER

SEE APP TO CONNECT. Check your La Crosse View app for notifications.

LA CROSSE VIEW

Add Your Sensors to the App

Upon getting the station connected to your Wi-Fi network, the next app screen will explain how your connected sensor(s) should be brought in. Within the next 15 minutes, you should receive an Add Device notification in your app. This is indicated by the Red Cloud and the numbers inside of it. Tap this icon to begin adding your sensor(s) into the app.

Adding/Dismissing Sensors

Once you've tapped the red cloud icon, options to add or dismiss your sensor will appear in the app.

ADD

ADD Button: Press ADD to add the sensor to your app. Within 10 minutes each sensor reading will show on your own app page.

DISMISS

DISMISS Button: Select DISMISS if you do not want the sensor to send readings to your app.

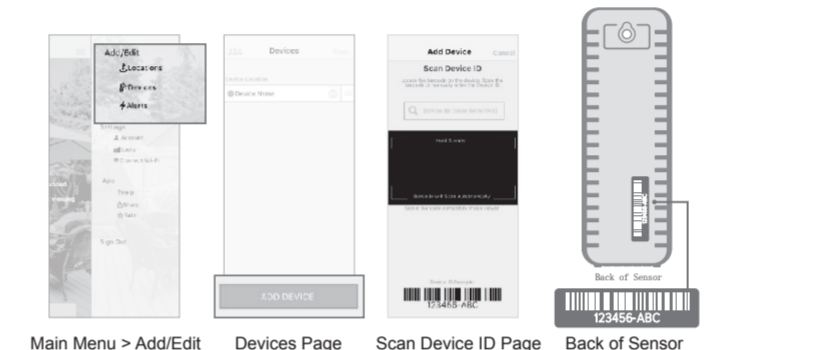
Note: If DISMISS is selected, you can scan the barcode on your sensor at any time to add it to your app if desired. Instructions on scanning the barcode to add your sensor is on the next page.

LA CROSSE VIEW

Add Your Sensors to the App

Manually Add Sensor to the App*

1. Open your La Crosse View app. On the Main Menu, go to ADD/EDIT and select DEVICES.
2. On the Devices page, select the ADD DEVICE or PLUS (+) button.
3. Scan the Barcode on your Sensor or type in the Device ID manually.
4. Confirm the sensor name and Device ID. Add a Device Name and Location Name, then select DONE.



* This step is only required if you do not receive the Add Device notification within the app. Prior to connecting to Wi-Fi and mounting your sensor, make sure your station is receiving sensor data.

BASICS

Station Settings

When the station is first powered on, it will search for the sensor which will connect within 10 minutes. To manually set your language, time, date and other settings, hold the REG. button to enter the Settings Menu.

Settings Menu Order

Greeting • Language • Beep ON/OFF • 12/24 Hour Time • Hour • Minute • Year • Month • Date • Calendar Order (Month/Date or Date/Month) • Temperature Unit (Celsius/Fahrenheit) • Pressure Units (hPa/hInHg) • Pressure Number Setting • Thank You

Navigation

1. Use the +/- buttons on the top of the station to adjust the values.
2. Press the REG. button to confirm selection and move to next step.
3. You may exit the Settings Menu at any time by pressing the +/- button on the front of the station.

Notes

Important: Language and units of measure seen on your station are not controlled in the app. Please use the Settings Menu to adjust.
• When a language is selected, the following instructions and weekday will be presented in that language.
• Weekday will set automatically after year, month, and date settings are adjusted.
• When in 24 hour time format, seconds will show in place of AM/PM markings.
• If you're connected to the Wi-Fi, the time and date will automatically update from the Internet. See pages 3-4 for more information.

BASICS

Buttons

1. **ALERTES**
Hold to enter Alert Settings.
2. **TEMP**
Press to view Temperature and Humidity History. While viewing, hold MINUS button to delete the history reading.
3. **CAP SUP**
Press to toggle through extra sensors and pressure. Hold to add sensors. While viewing, hold the MINUS button delete the sensor.
4. **+/- (PLUS/MINUS)**
Use to adjust values. Hold both together to search for Wi-Fi signal. In Alerts, press to arm/disarm alerts.
5. **REG.**
Press to view Wi-Fi Status. Hold to enter Settings Menu.
6. **IN/EXT**
Press to view switch between Indoor or Outdoor Temperature/Humidity display.
7. **PREVISIONS**
Press to Refresh the Forecast Readings.
8. **FORECAST PRECIP**
Press to change Forecast Times. Hold to select Percent of Precipitation or Amount of Precipitation reading.
9. **BACKLIGHT**
Press to adjust backlight. Hold to enter Auto-Dim settings.
10. **Wi-Fi (on back)**
Press to search for Wi-Fi signal. Hold to delete the currently saved network sign-on information and search for a new Wi-Fi signal.

BASICS

LCD Display Brightness

Adjusting the LCD Display Brightness
Press the +/- button to adjust the backlight intensity. There are 4 brightness levels, plus an off option.

Auto-Dim Settings

Program your display to automatically dim during preselected times.

1. Hold the +/- button to enter the Auto-Dim Settings Menu.

BACK

3. INDOOR OR OUTDOOR TEMPERATURE

Current indoor or outdoor temperature (based on setting)

4. INDOOR OR OUTDOOR HUMIDITY

Current indoor or outdoor humidity (based on setting)

5. OUTDOOR ICON

App Store is a service mark of Apple Inc. App Store is a service mark of Apple Inc.

6. AUTO-SCROLL ICON

Icon will appear when the auto-scroll setting is active

7. LOW BATTERY INDICATOR

Indicates thermo-hygro sensor battery needs to be replaced

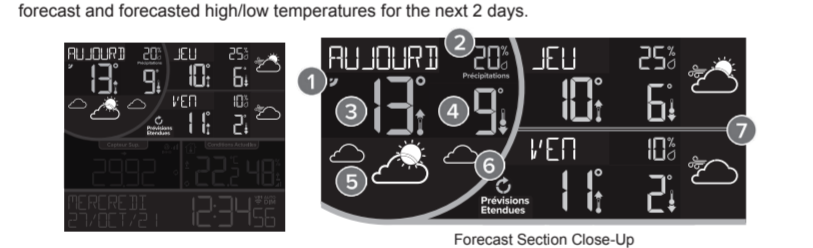
8. HUMIDITY ALERT ICONS

Indicates an active high or low humidity alert

9. SENSOR RECEPTION INDICATOR

Indicates if the station is receiving data from the thermo-hygro sensor

You can view up to 6 days of forecasts and 12 hours of forecast data. The default display shows current forecast and forecasted high/low temperatures for the next 2 days.



1. INTERNET ICON

Indicates the station is connected and receiving AccuWeather forecasts

2. CHANCE OF PRECIPITATION

Percent chance of precipitation. Hold +/- button to view amount of precipitation*

3. DAILY FORECASTED HI TEMPERATURE

Forecasted daily high temperature**

4. DAILY FORECASTED LO TEMPERATURE

Forecasted daily low temperature**

5. FORECAST ICONS

Predicts weather conditions in the next 12 hours**

6. FORECAST REFRESH ICON

Press the PREVISIONS button to refresh the three-day forecast. The icon will cycle for 30 seconds**

7. EXTENDED FORECAST SECTION

Forecast icons and daily forecasted highs and lows for the next two days

8. DAILY FORECASTED HI TEMPERATURE

Forecasted daily high temperature**

9. DAILY FORECASTED LO TEMPERATURE

Forecasted daily low temperature**

***Your display must be connected to Wi-Fi to receive AccuWeather forecast data.**

**When connected, your station will display 6 additional forecast icons.

** Refreshing the forecast may result in the same readings if they are current.

Forecast When Not Connected

When station is not connected, you'll see current temperature and humidity, as well as daily high/low temperature and humidity records from your sensor.

Day/Night Forecast

When connected, the sun icon will show in daylight hours and the moon icon will show during nighttime hours if the forecast is for sunny or partly sunny.



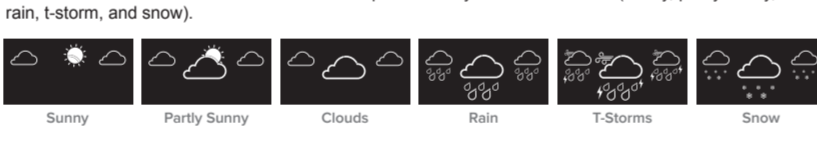
• The times the sun and moon icons appear are pre-programmed and cannot be adjusted.

• The station must be connected Wi-Fi to activate the daylight forecast feature.

FORECAST

Viewing Your Forecast Data

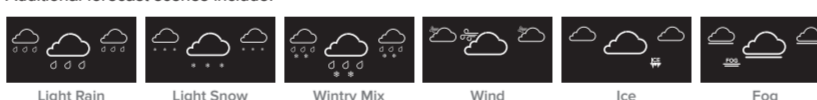
Forecast Icons
When using as a standalone station, the display will use changes in barometric pressure to predict your weather to come in the next 12 hours. This is represented by 6 forecast icons (sunny, partly sunny, clouds, rain, t-storm, and snow).



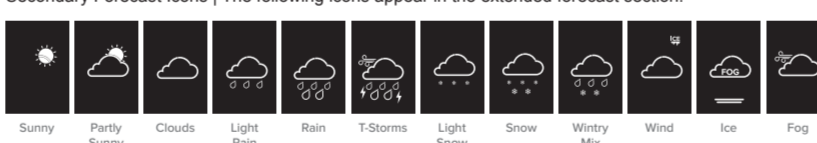
Please Note: The Forecast Icons may not represent your current weather. They are a future prediction of the weather to come over the next 12 hours.

AccuWeather

When connected to Wi-Fi, the station will receive additional weather icons, chance of precipitation values, and future forecast information. These enhanced Internet features are powered by AccuWeather. Additional forecast icons include:



Secondary Forecast Icons | The following icons appear in the extended forecast section:



Tip: The Wi-Fi icon will appear in the top right corner of the forecast section when your display is connected and receiving AccuWeather forecasts.

PRESSURE

Relative Pressure

- Your Relative Pressure reading will come from your station's internal barometer.
- Please allow up to 10 days for automatic calibration, or program your local pressure value in the Settings Menu.
- The red arrows located above the values represent Pressure Tendency.
- Select your desired unit of measurement (hPa or InHg) in the Settings Menu. You can also set a specific pressure number setting if desired.
- If a red low battery indicator appears in the pressure/extra sensor section, replace batteries in the extra sensor.
- If a green low battery indicator appears in the circular section, replace batteries in the corresponding sensor.

Note: The default pressure reading is 1013 hPa (29.92 InHg). The station will acclimate on its own if the pressure number is not set.

BASICS

Low Battery Indicators

- If an orange low battery indicator appears in the outdoor temperature section, replace batteries in the TH sensor.
- If a white low battery indicator appears next to the time display, replace batteries in the station.
- If a red low battery indicator appears in the pressure/extra sensor section, replace batteries in the extra sensor.
- If a green low battery indicator appears in the circular section, replace batteries in the corresponding sensor.

SENSORS

Sensor Placement

- Mounting Your Thermo-Hygro Sensor
Use the hole at the top to hang your sensor from the back using a nail. Or, insert a mounting screw through the front of your sensor.
- Mount your sensor on a north-facing wall or in any shaded area. Under an eave or deck rail is preferred to avoid inaccurate readings from the sun.
- The maximum wireless transmission range to the station is up to 121 meters (400 feet) in open air, not including walls or floors.
- Be sure your sensor is mounted vertically, to allow moisture to drain out properly.

Add-On Sensors

Whether you choose to connect with the La Crosse View app or not, this station can play display data for up to 4 extra sensors. This data shares the same area as the pressure readings.

Auto-Scroll Icon
When the Auto-Scroll feature is active, the Auto-Scroll icon () will appear. Each reading will show for 6 seconds. Continue to press the CAP SUP button until the icon disappears to stop auto-scroll.

1. Hold the CAP SUP button until you see the Sensor Reception Indicator start to animate.
2. Install batteries into your sensor. If the sensor has a TX button, press it to force a transmission signal. This button is usually located in or near the sensor's battery compartment. The LED light on the sensor will flash once.
3. Your sensor should connect within the next 3 minutes, briefly displaying its ID and type on the LCD. The Sensor Reception Indicator will show solid on the screen when a sensor is connected.
4. Press the CAP SUP button to cycle through the data you'd like displayed on the LCD. The Auto Scroll icon () will appear if activated.

Note: When first powering up, or after a factory reset, extra sensors should automatically connect to your station.

APPENDIX

Specifications

- Wi-Fi NETWORK REQUIREMENTS**
 - Broadcast Frequency: 2.4GHz (802.11 b/g/n)
 - Network Name/Password: Must Not Exceed 45 Characters
 - Network Speed: Must Be Greater than 1 Mbps
- MOBILE REQUIREMENTS**
 - Apple phones require iOS with cellular or Wi-Fi service.
 - Android phones require Android OS with cellular or Wi-Fi service.

Please Note: If you have multiple band router, this device will connect to the 2.4GHz band when connecting to Wi-Fi.

STATION SPECIFICATIONS

- Indoor Temperature Range: 0°C to 50°C (32°F to 122°F)
- Indoor Humidity Range: 10 to 99%RH
- Relative Pressure Range: 800 to 1100 hPa (23.62 to 32.48 InHg)
- Power Requirements:
 - Primary Power: 5.0V Adapter (included)
 - Battery Backup: 1 CR2032 Coin Cell Battery (included)
- Dimensions: 16.5 cm L x 2.78 cm W x 7.3 cm H (6.50 in. L x 1.09 in. W x 6.81 in. H)
- LCD Brightness: 4 Intensity Levels + OFF (Programmable Auto-Dim Backlight Option)
- Language Options: English, Spanish, French, and German (Translation Available for Menus and Calendar)

SENSOR SPECIFICATIONS (LTV-THS)

- Outdoor Temperature Range: -40°C to 60°C (-40°F to 140°F)
- Outdoor Humidity Range: 10 to 99%RH
- Transmission Range: 121 Meters (400 feet)
- Power Requirements:
 - Primary Power: 5.0V Adapter (not included)
 - Dimensions: 5.0 cm L x 1.91 cm W x 14.55 cm H (1.91 in. L x 0.75 in. W x 5.73 in. H)

WARNING

1. This product contains a button battery.
2. If swallowed, it could cause severe injury or death in just 2 hours.
3. Seek medical attention immediately.

WARNING

KEEP BATTERIES OUT OF REACH OF CHILDREN

1. Swallowing may lead to serious injury in as little as 2 hours or death, due to chemical burns and potential perforation of the esophagus.
2. If you suspect your child has swallowed or inserted a button battery, immediately seek urgent medical assistance.
3. Examine devices and make sure the battery compartment is correctly secured, e.g. that the screw or other mechanical fastener is tightened.
4. Do not use if compartment is not secure.
5. Dispose of used button batteries immediately and safely.
6. Flat batteries can still be dangerous.
7. Tell others about the risk associated with button batteries and how to keep their children safe.

APPENDIX

- Care and Maintenance**
 - Do not mix old and new batteries.
 - Do not mix Alkaline, Standard, Lithium or Rechargeable Batteries.
 - Always purchase the correct size and grade of battery most suitable for the intended use.
 - Replace all batteries of a set at the same time.
 - Clean the battery contacts and those of the device prior to battery installation.
 - Ensure the batteries are installed correctly regarding polarity (+ and -).
 - Remove batteries from equipment with is not to be used for an extended period.
 - Remove expired batteries promptly.
 - Do not expose to extreme temperature, vibration or shock.
 - Clean with a soft damp cloth. Do not use solvents or scouring agents.
 - The product is not a toy. Keep it out of reach of children.
 - The product is not to be used for medical purpose or for public information. It is intended for home use only.
 - The specs of this product may change without prior notice.
 - Improper use or unauthorized opening of housing voids warranty.
 - If the product is not working properly, change the batteries and/or check the AC cord connection.

Caution!

Risk of fire or explosion or defeat the safeguard of equipment if the battery is replaced by an incorrect type. Replace only with the same or equivalent type. Disposal of a battery into fire or a hot oven, or mechanically crushing or cutting of a battery, that can result in an explosion. High or low extreme temperatures or low air pressure at high altitude that the battery can be subjected to during use, storage or transportation. Leaving the battery in an extremely high temperature and/or low high air pressure surrounding environment that can result in an explosion or the leakage of flammable liquid or gas. The manufacturer is not responsible for any radio or TV interference caused by unauthorized changes or modifications to this equipment. Such changes or modifications could void the user authority to operate the equipment. All rights reserved. This manual may not be reproduced in any form, even in part, or duplicated or processed using electronic, mechanical, or chemical process without the written permission of the publisher. This booklet may contain errors or misprints. The information it contains is regularly checked and corrections are included in subsequent editions. We disclaim any responsibility for any technical error or printing error, or their consequences.

All trademarks and patents are recognized.

APPENDIX

Support

For additional support, visit: <http://www.lacrossetechnology.fr/contact.html>

Factory Reset

If you're still experiencing issues, press and hold the ALERTES and PREVISIONS buttons down together until the display beeps.

Recycling and Disposal

Please consider the environment when deciding to dispose of this product. Although household electronics are generally safe to use on a daily basis, incorrect disposal can cause negative and potentially irreversible impacts on our environment.

Check with local donation centers to see if your product can be donated for future use. If disposal is the only option, federal agencies, local governments, and certified retailers may have electronic recycling programs in place. Programs may vary based on location.

Trademarks
Apple and the Apple logo are trademarks of Apple Inc., registered in the U.S. and other countries. App Store is a service mark of Apple Inc. Google Play and the Google Play logo are trademarks of Google Inc.

</