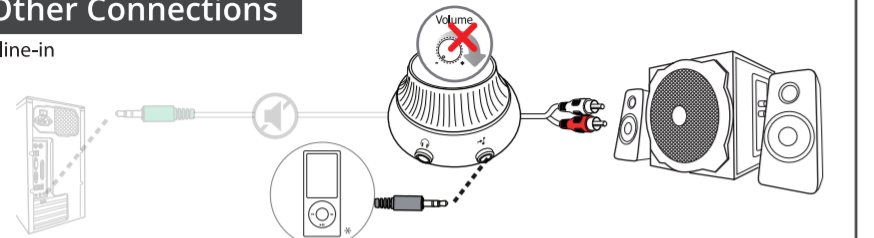
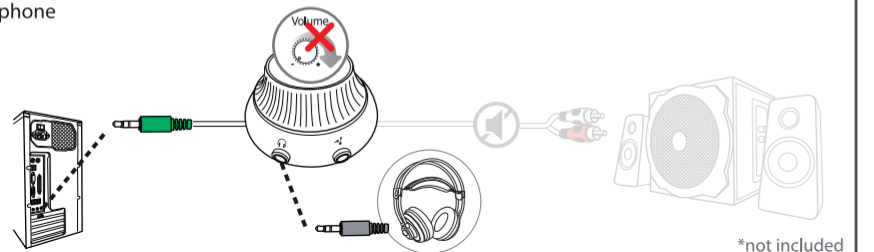


6. Other Connections

AUX/line-in



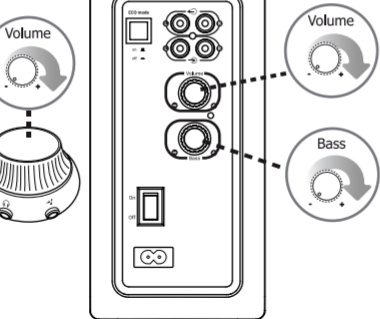
Headphone



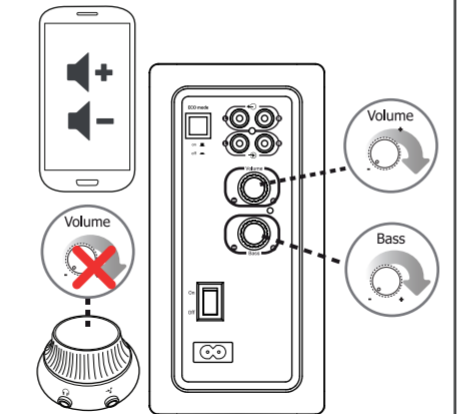
*not included

7. Volume Control

Wired setup



Wireless setup



8. Installation Windows 10/8/7

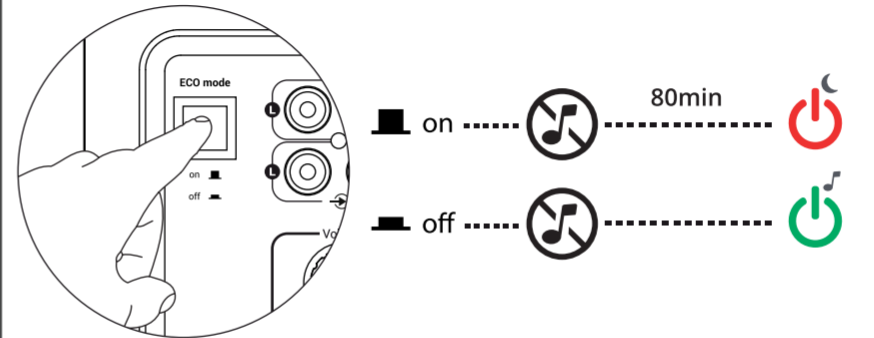
Windows 8
Start here



Windows 10/7/Vista
Start here



9. ECO Mode



Frequently Asked Questions www.trust.com/19367/faq

© 2017 Trust International B.V. - All rights reserved - Laan van Barcelona 600 - 3317DD - Dordrecht - NL

Trust

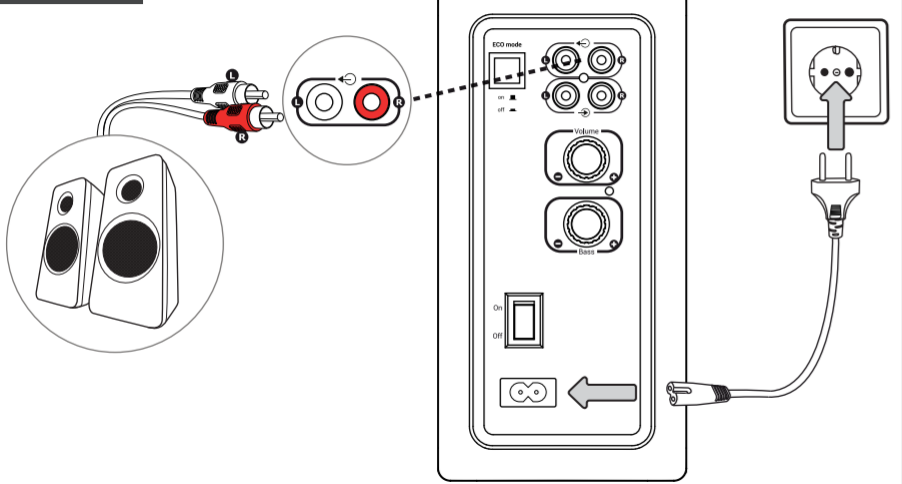
TYTAN

2.1 Speaker set

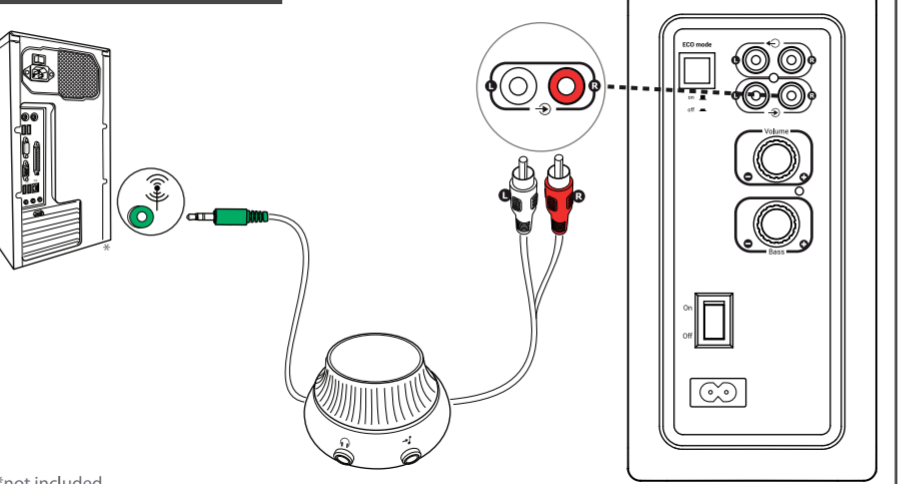


Quick Installation Guide

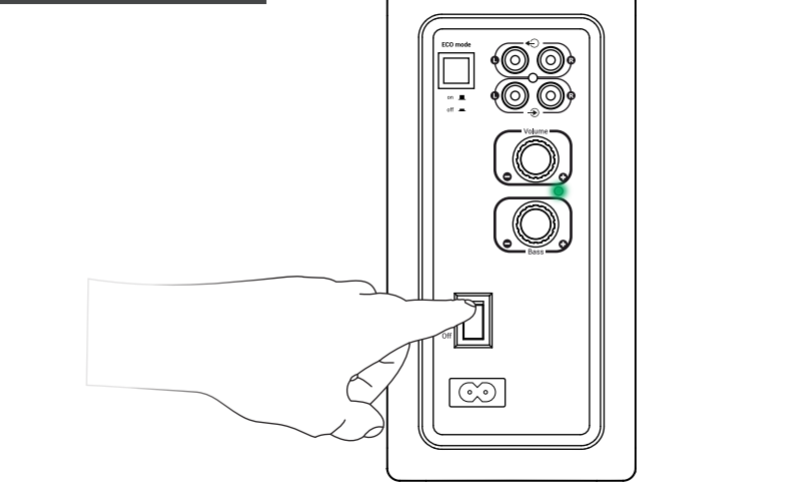
1. Setup



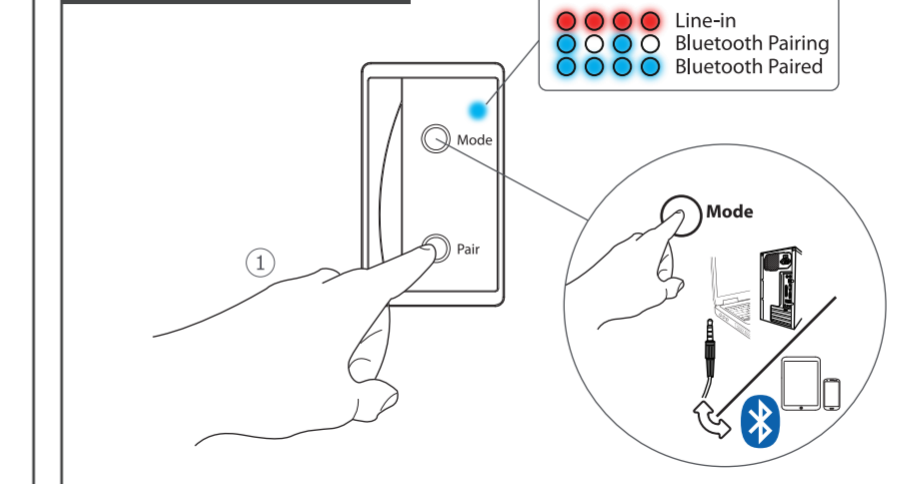
2. Connect Audio



3. Power On/Off



4. Wireless Setup 1/2



5. Wireless Setup 2/2

